

Superficie lorda totale		= mq	318.02
Deduzioni	mq	1.99 + 11.54	= mq 13.53
Totale	mq	318.02 - 13.53	= mq 304.49
Zona con altezza < 2 m	mq	52.70 (30.70 + 22.00) · 30%	= mq 15.81 (9.21 + 6.60)
Appartamento grande	mq	217.14 - 9.21	= mq 207.93
Appartamento/Uffici	mq	87.35 - 6.60	= mq 80.75

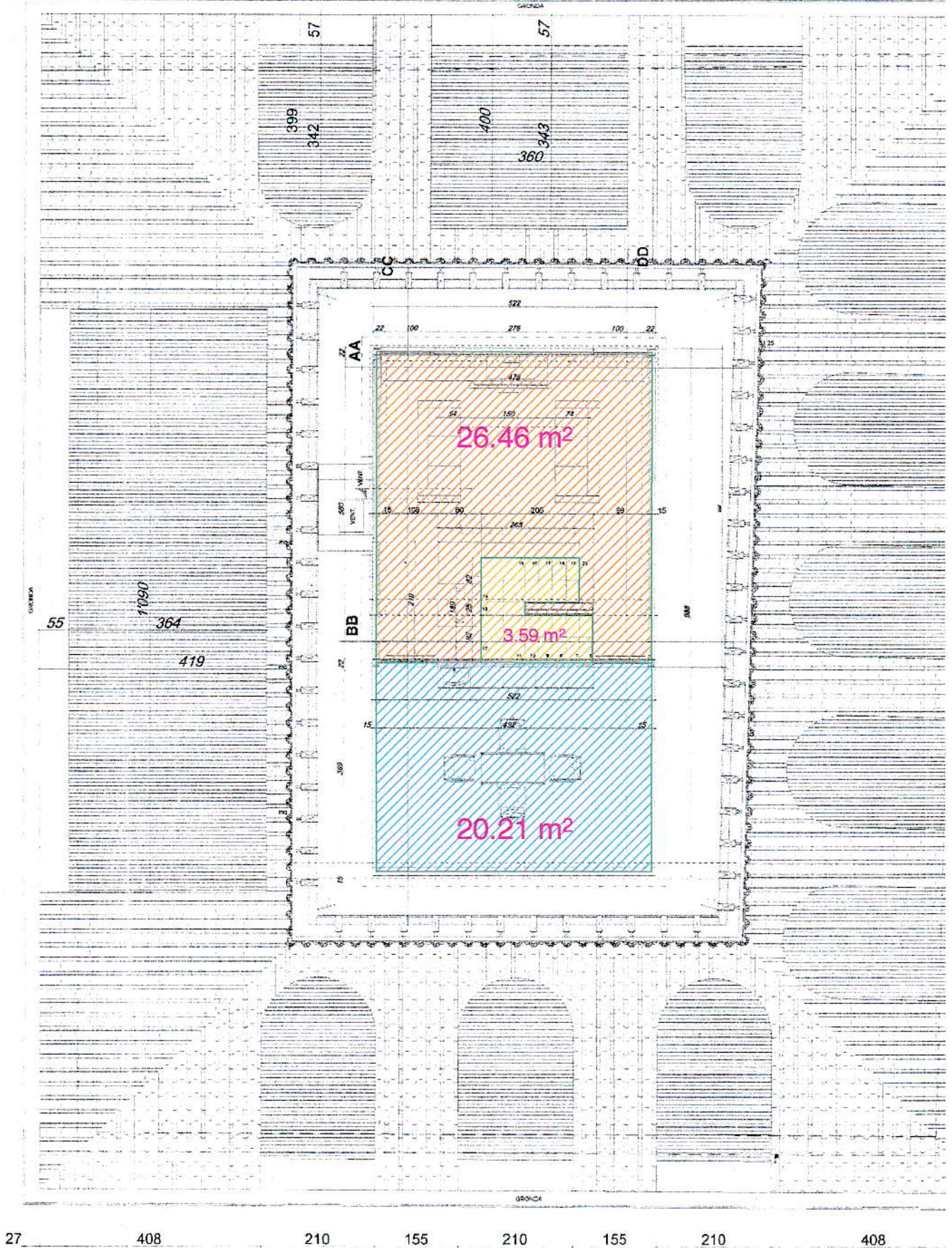
30

553

1'090

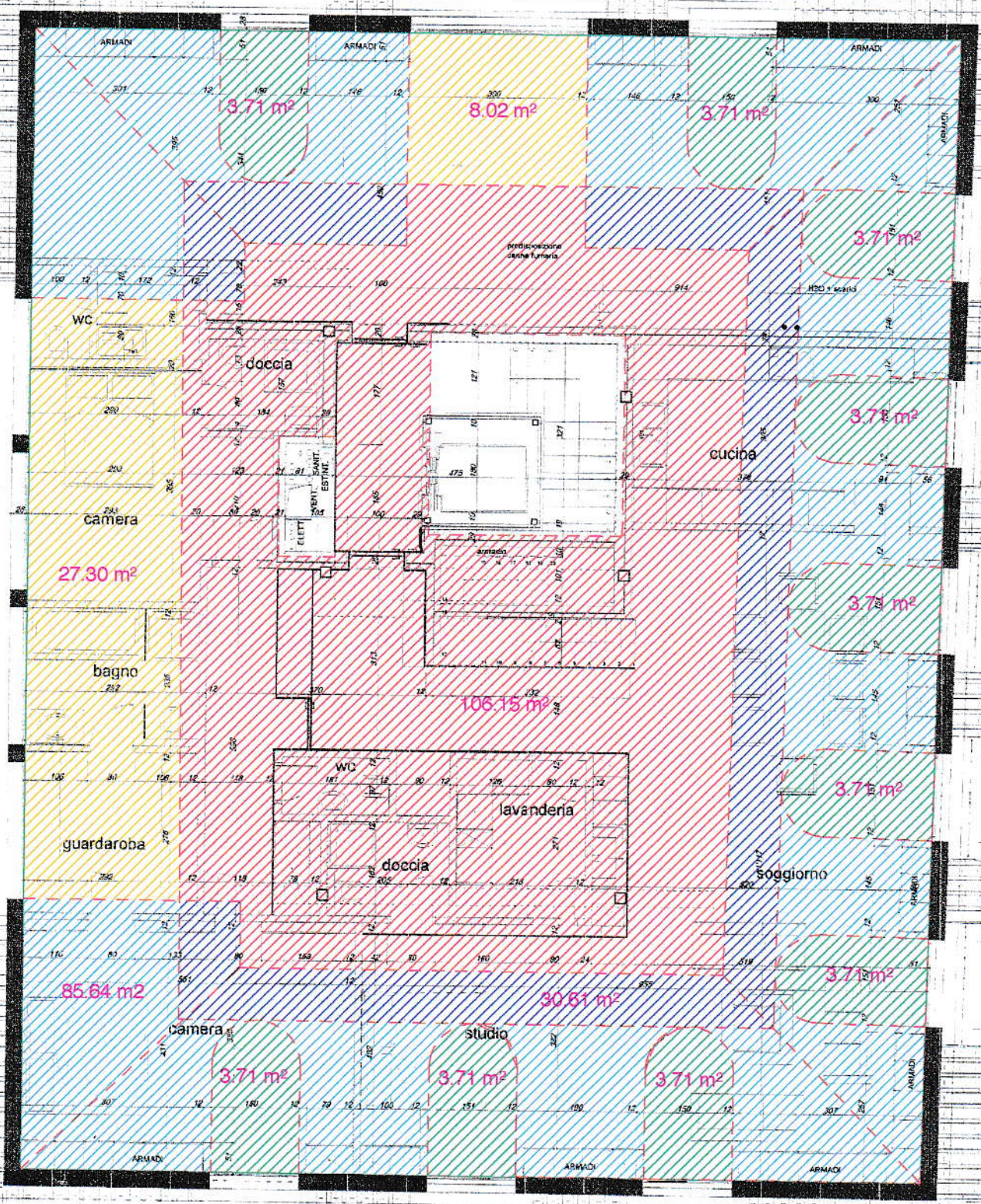
553

30



1'574

Superficie lorda totale	= mq	50.26
Deduzione scala	= mq	3.59
Deduzione 1/2 terrazza	mq 20.21 : 2	= mq 10.10
Superficie soppalco	mq 50.26 - (3.59 + 10.10)	= mq 36.57





Rosso	h 3.00 ml	x	106.15 mq	=	318.45
Giallo	h 2.87 ml	x	35.32 mq	=	101.36
Blu	h 2.85 ml	x	30.61 mq	=	87.25
Verde	h 2.40 ml	x	37.10 mq	=	89.04
Azzurro	h 2.10 ml	x	85.64 mq	=	179.84

Totali			294.82 mq		775.94
--------	--	--	-----------	--	--------

$$h \text{ media} = \frac{775.94 \text{ mq}}{294.82 \text{ mq}} = 2.631 \text{ ml}$$